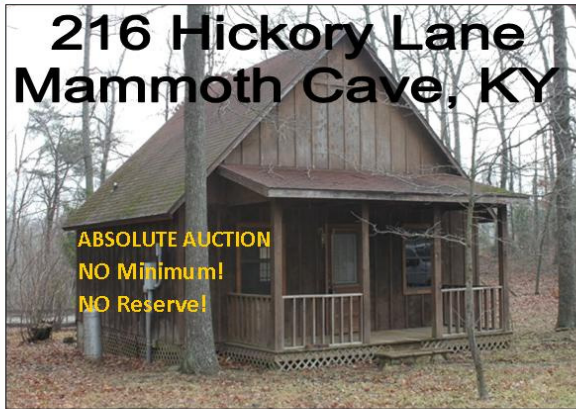


# ABSOLUTE AUCTION

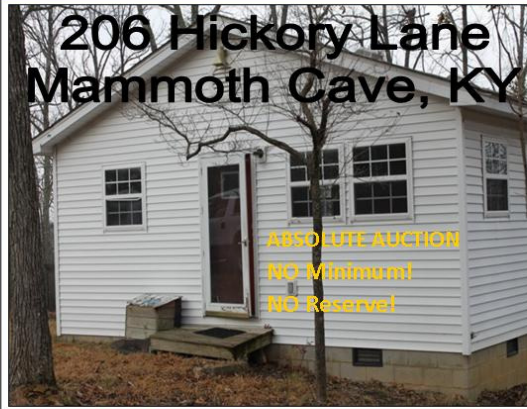
## Beautiful Nolin Lake Area Two Cabins Plus Three Lots Saturday, Feb. 12th ~ 10:00AM

216 Hickory Lane  
Mammoth Cave, KY



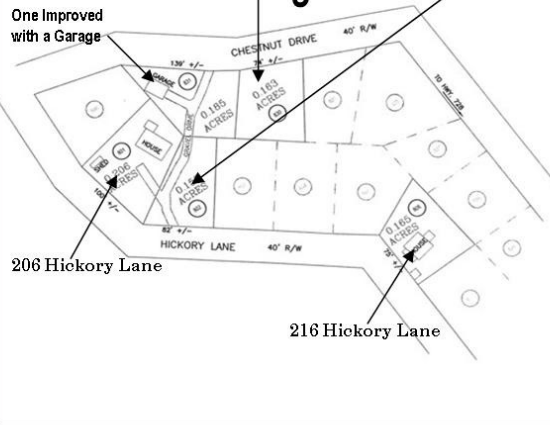
ABSOLUTE AUCTION  
NO Minimum!  
NO Reserve!

206 Hickory Lane  
Mammoth Cave, KY



ABSOLUTE AUCTION  
NO Minimum!  
NO Reserve!

### Plus Three Building Lots to be Sold



### ~ 216 Hickory Lane & 206 Hickory Lane ~ Mammoth Cave, KY

Have you been looking for a weekend get away cabin? This property could be it! The two cabins and three additional building lots are located in a Subdivision that overlooks the beautiful Nolin Lake. One of the lots is improved with a 16 x 24 garage. The cabins and lots will sell at Absolute Auction to the highest bidder. Make your plans to attend this auction to purchase your next home or weekend cabin. Join the Progressive Auction Group on Sat., February 12th at 10:00AM. **All properties will sell from 216 Hickory Lane.** Both cabins will be open for your inspection on the day of the Auction or by appointment. For more information on these properties, please call listing Auctioneer, Alan Kepple at 791-2288. **Terms and Conditions:** 10 % down Day of Auction with balance due on or before March 14, 2011. Possession of Real Estate the day of closing. 2011 Real Estate Taxes shall be prorated between the Buyer and Seller through the date of closing. A 10% Buyers Premium will be added to the final bid in order to determine the overall contract price. Bidders shall satisfy themselves as to condition, quality and description of property before bidding. All information and descriptions are believed to be correct, however, no warranties are given for accuracy. Property sold "as-is, where-is", without warranties expressed or implied. Announcements made the day of Auction shall take precedence over any advertise-

**Directions:** Take 31-W approx. 7 miles North of Bowling Green to left on KY Hwy. 101. Take Hwy. 101 5.4 miles, road changes to KY Hwy. 259, travel 10.5 miles through Brownsville to right on Hwy. 728. Take Hwy. 728 5.3 miles to left on Chestnut. Property approx. 1/4 mile. Signs posted.

### EXPERIENCE THE DIFFERENCE OF AN AUCTION GROUP



Steve Cherry, CAI  
CES, PRI, KY State  
Champion Auctioneer  
392-5258



Steve Henry, PRI  
Auctioneer - Certified  
Personal Property Appraiser  
392-5325



Travis Ayers  
Apprentice  
Auctioneer  
779-1918



Murray McCandless  
Auctioneer - BAS  
Benefit Auction Specialist  
872-7587



Mike Carter  
Apprentice  
Auctioneer  
535-5739



Alan Kepple  
Auctioneer  
791-2288